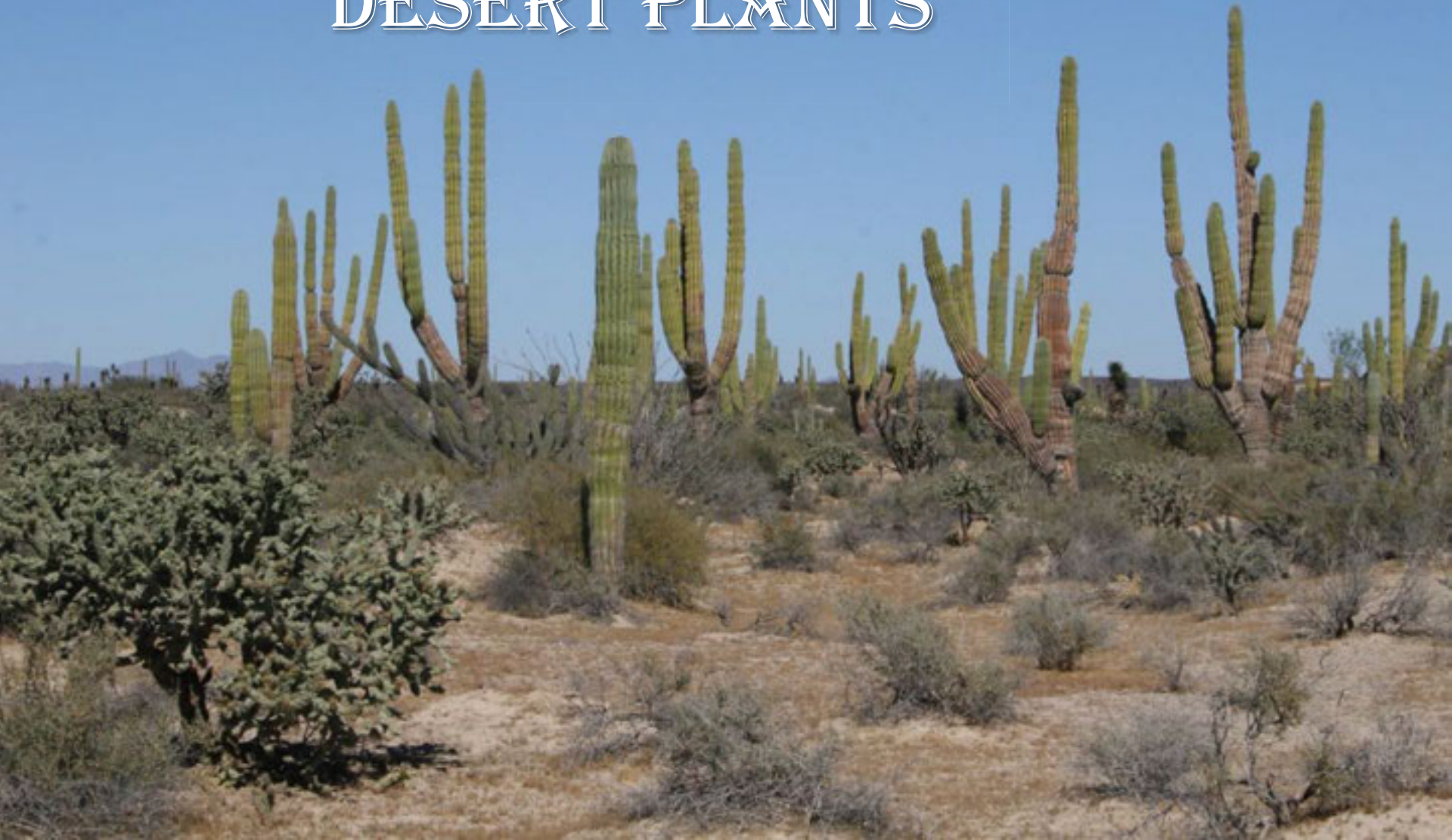


COMMON PLANTS OF LAGUNA SAN IGNACIO

February 2014

DESERT PLANTS





Slipper Plant
Candeilla

Euphorbia lomelii

A photograph of a cholla cactus in a rocky desert landscape. The cactus is the central focus, with its dark, woody trunk and numerous green, segmented arms. The arms are covered in small, yellowish-green flowers. The ground is covered in small, reddish-brown rocks and sparse, dry vegetation. In the background, there are more trees and shrubs, some with green leaves and others bare. The overall scene is a typical desert environment.

Cholla

Cylindropuntia cholla

Cholla

Cylindropuntia cholla



A close-up photograph of a cholla cactus, showing its characteristic green, segmented stems and numerous sharp, light-colored spines. The cactus is set against a blurred background of more cactus and sandy ground.

Cholla

Cylindropuntia cholla

Elephant Cactus

Cardon

Pachycereus pringlei



A photograph of several tall, columnar cacti in a desert landscape. The cacti are green with distinct vertical ribs and are set against a clear blue sky with light, wispy clouds. The ground is dry and covered with sparse, low-lying vegetation. The cacti vary in height and branching patterns, with some having multiple stems.

Elephant Cactus Cardón

Pachycereus pringlei



Elephant Tree
Torote Blanco
Pachycormus discolor



Elephant Tree
Torote Blanco
Pachycormus discolor



Galloping Cactus

Pitaya Agria

Stenocereus gummosus

Old Man Cactus - Garambullo

Lophocereus schottii





Old Man Cactus
Garambullo
Lophocereus schottii

Yucca Tree

Datilillo

Yucca valida





Yucca Tree

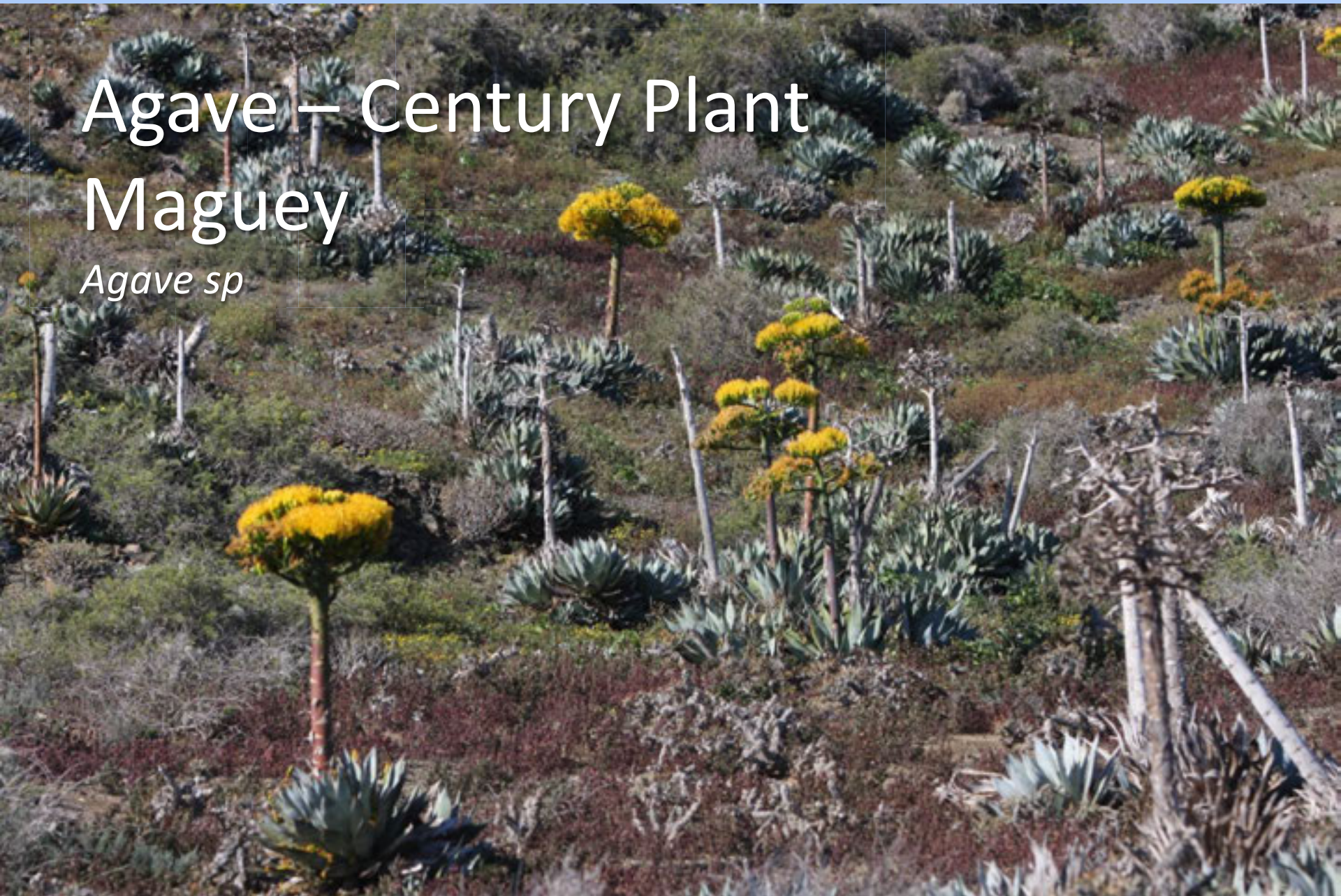
Datilillo


Yucca valida

Agave – Century Plant

Maguey

Agave sp





Agave – Century
Plant

Maguey

Agave sp

ALKALINE PLAIN





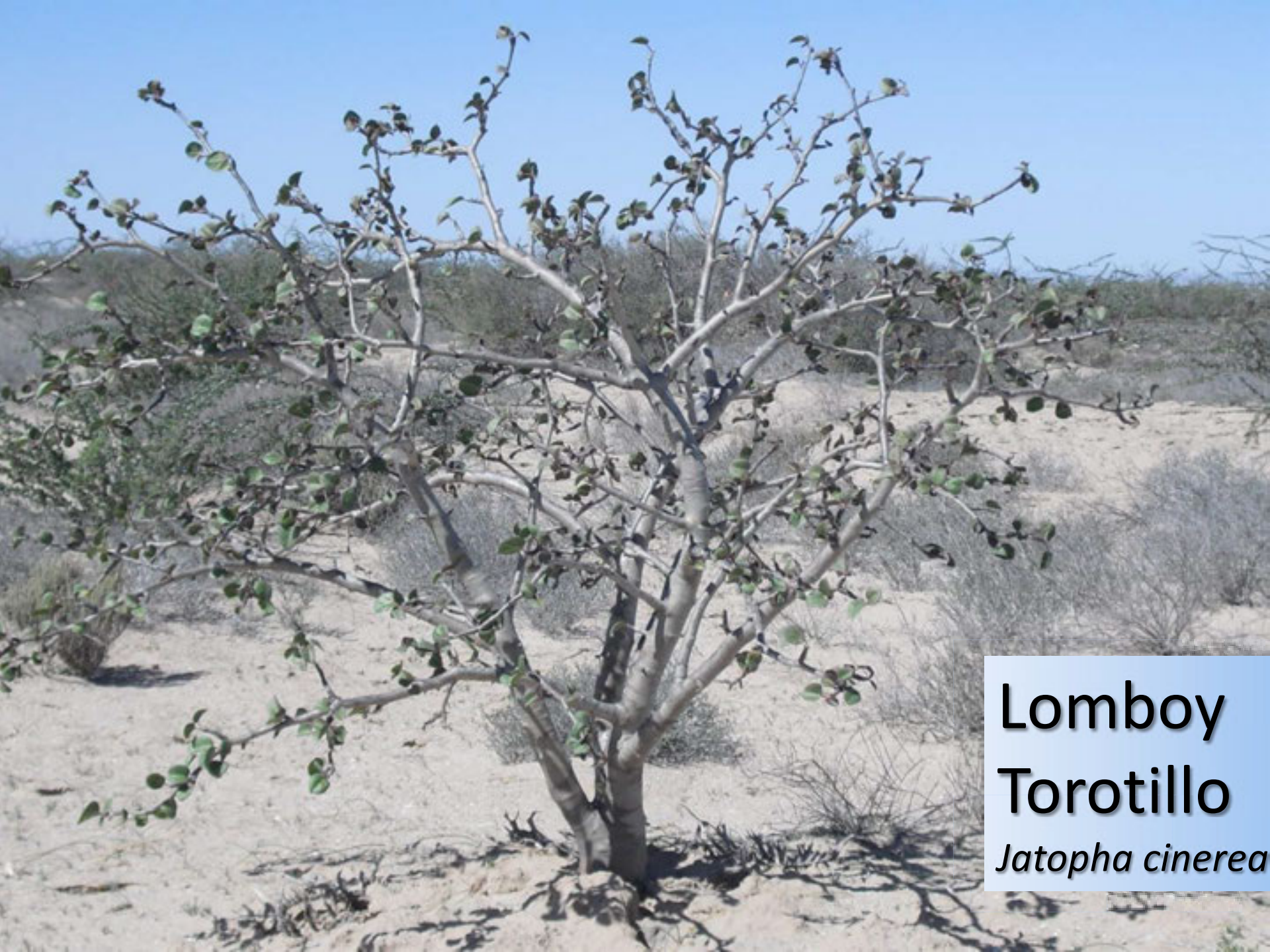
Adam's Tree

Palo Adán

Fouquieria diguetii

Adam's Tree
Palo Adán
Fouquieria diguetii





**Lomboy
Torotillo**
Jatopha cinerea



Lomboy
Torotillo
Jatopha cinerea

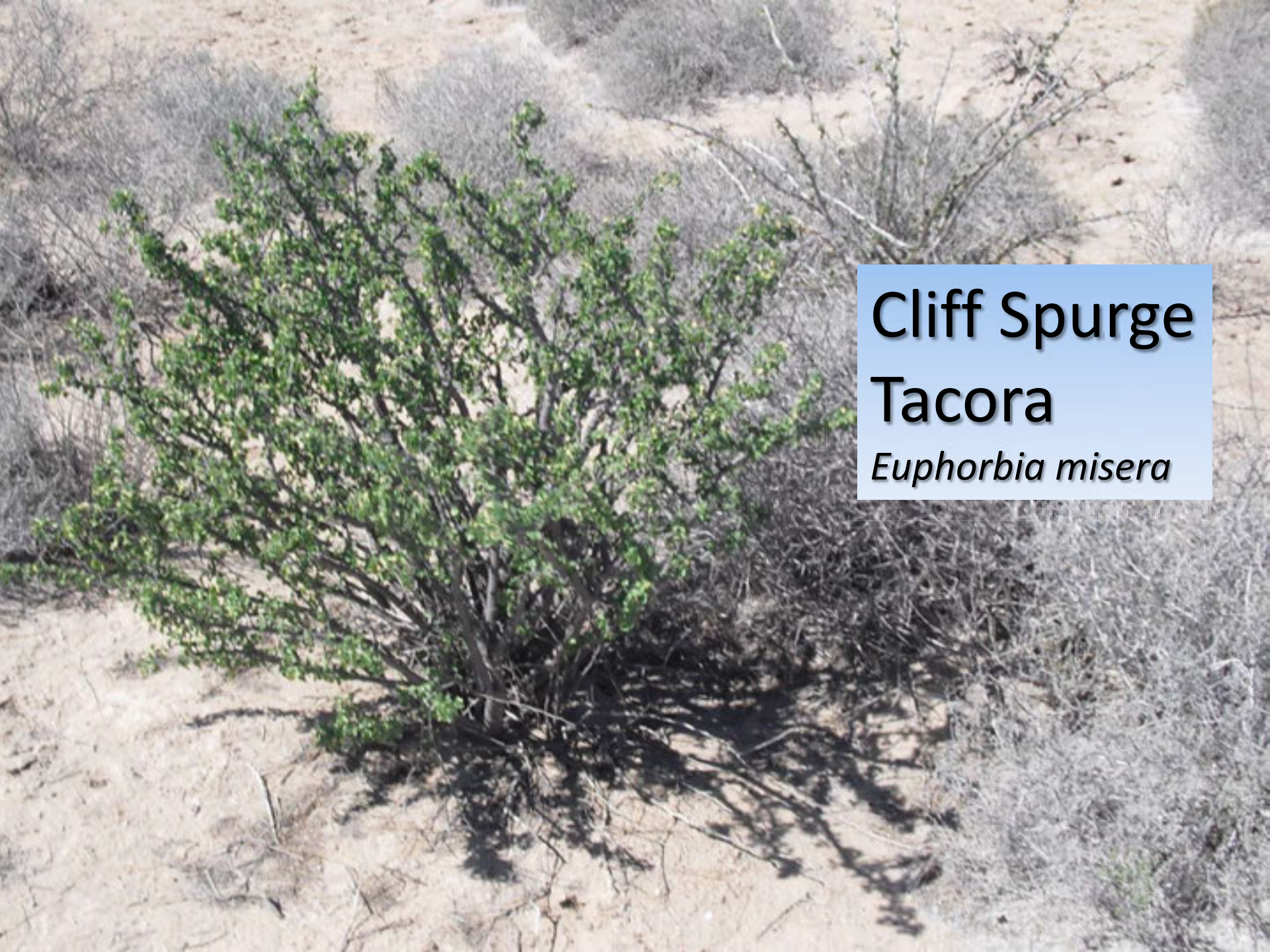


Barrel Cactus
Biznaga
Ferocactus fordii



Fishhook Cactus
Viejito

Mammillaria sp.



Cliff Spurge

Tacora

Euphorbia misera



Cliff Spurge

Tacora

Euphorbia misera



Palmer Frankena
Yerba Reuma

Frankenia plameri

Palmer Frankena

Yerba Reuma

Frankenia plameri





Bush Seepweed Quelite Saldo

Suaeda nigra

A close-up photograph of a Bush Seepweed branch. The branch is covered in small, succulent-like green leaves and numerous small, purple flowers. The background is a blurred, sandy or light-colored ground.

Bush Seepweed

Quelite Saldo

Suaeda nigra



Locoweed
Cascabelito

Astragalus magdalenae

Locoweed
Cascabelito
Astragalus magdalenae





Locoweed

Cascabelito

Astragalus magdalenae



COASTAL DUNES

TYPICAL DUNES INSIDE LAGUNA SAN IGNACIO





Saltbush
Saladillo
Atriplex sp.



Saltbush
Saladillo

Atriplex sp.



Iodine Bush
Chamizo

Allenrolfea occidentalis

MUDFLATS



Iodine Bush

Chamizo

Allenrolfea occidentalis

Iodine Bush Chamizo

Allenrolfea occidentalis



Iodine Bush Chamizo

Allenrolfea occidentalis



DUNES TO WETLANDS TRANSITION ZONE



INTERTIDAL MARGINS





Saltwart

Dedito

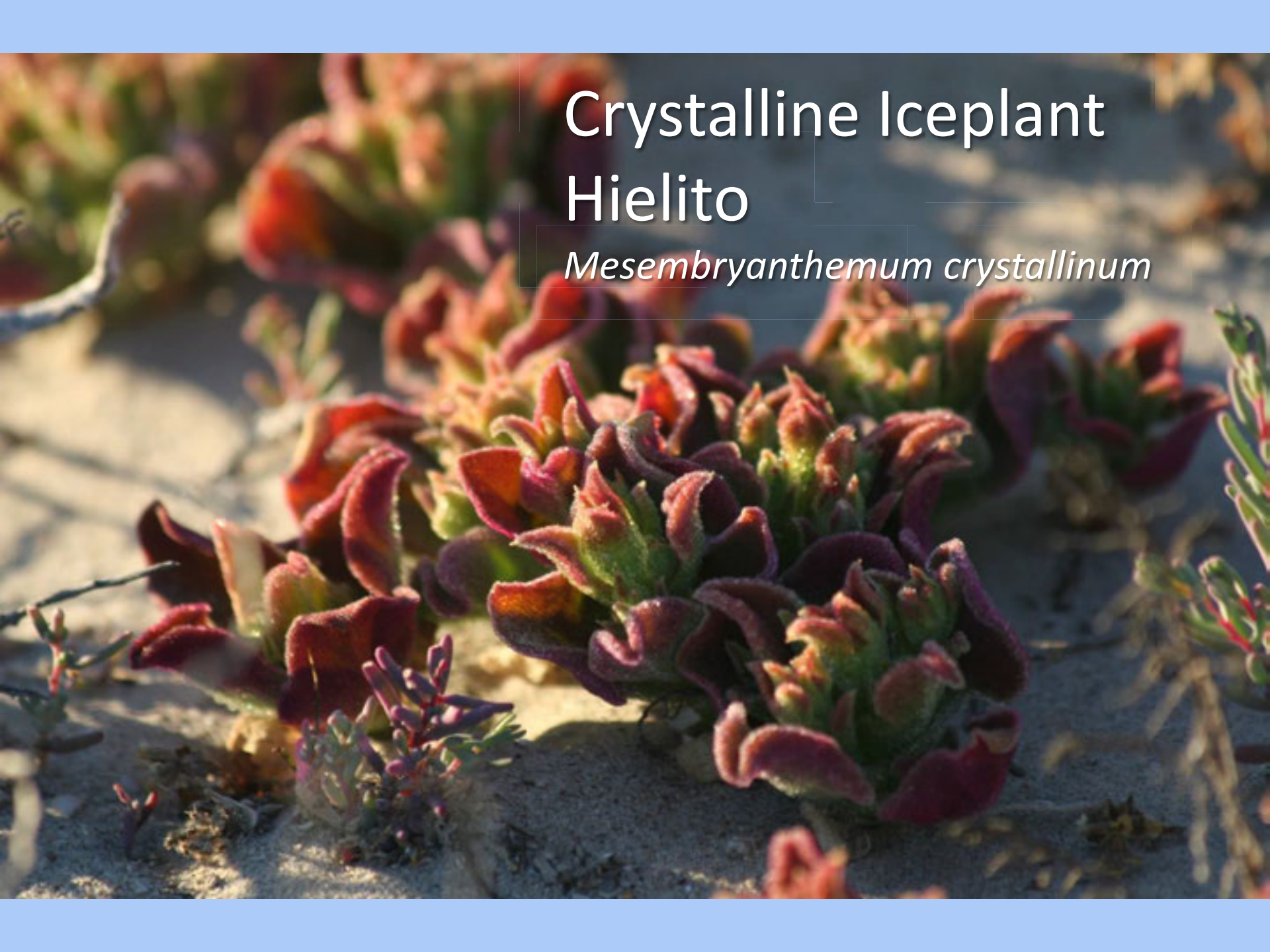
Batis maritima



Saltwart

Dedito

Batis maritima

A close-up photograph of a Crystalline Iceplant (Hielito) growing on a sandy surface. The plant features thick, succulent, reddish-purple leaves with a crystalline texture. The background is a soft-focus view of the same plant and sand. The text is overlaid on the upper right portion of the image.

Crystalline Iceplant Hielito

Mesembryanthemum crystallinum

Add more succulents here...

DESERT TO SALT MARSH TRANSITION AREAS



An aerial photograph of a salt marsh. The landscape is a mosaic of water channels and dense, low-lying vegetation. The vegetation has a mix of green, brown, and reddish-orange hues, suggesting a seasonal change. Several white birds, likely egrets or herons, are scattered throughout the scene. One bird is captured in mid-flight in the center-left, with its wings spread. Other birds are standing in the water channels or on the marsh flats. The overall scene is a natural, undisturbed wetland environment.

SALT MARSH

DUNES TO MANGROVE TRANSITION AREAS



Red Mangrove
Mangle Rojo
Rhizophora mangle



MANGROVE ESTUARY



Red Mangrove

Mangle Rojo

Rhizophora mangle

Seed pod and embryo





Red Mangrove
Mangle Rojo

Rhizophora mangle

Young plant



Red Mangrove
Mangle Rojo

Rhizophora mangle

Young plant

Red Mangrove

Mangle Rojo

Rhizophora mangle

Mature thicket with prop roots





Pickleweed in a mangrove estuary

Salicornia subterminalis / *Arthrocnemum subterminale*

White Mangrove

Mangle Blanco

Laguncularia racemosa



A photograph showing the air roots of a white mangrove tree. The roots are dark brown and gnarled, extending from the water onto a pebbly and sandy bank. The water is clear and blue, reflecting the sky. The background shows more of the mangrove forest and a clear sky.

Air-Roots of the White Mangrove Mangle Blanco

Laguncularia racemosa



Chord grass

Spartina foliosa

TYPICAL ENTRANCE TO A MANGROVE
CHANNEL AT LOW TIDE

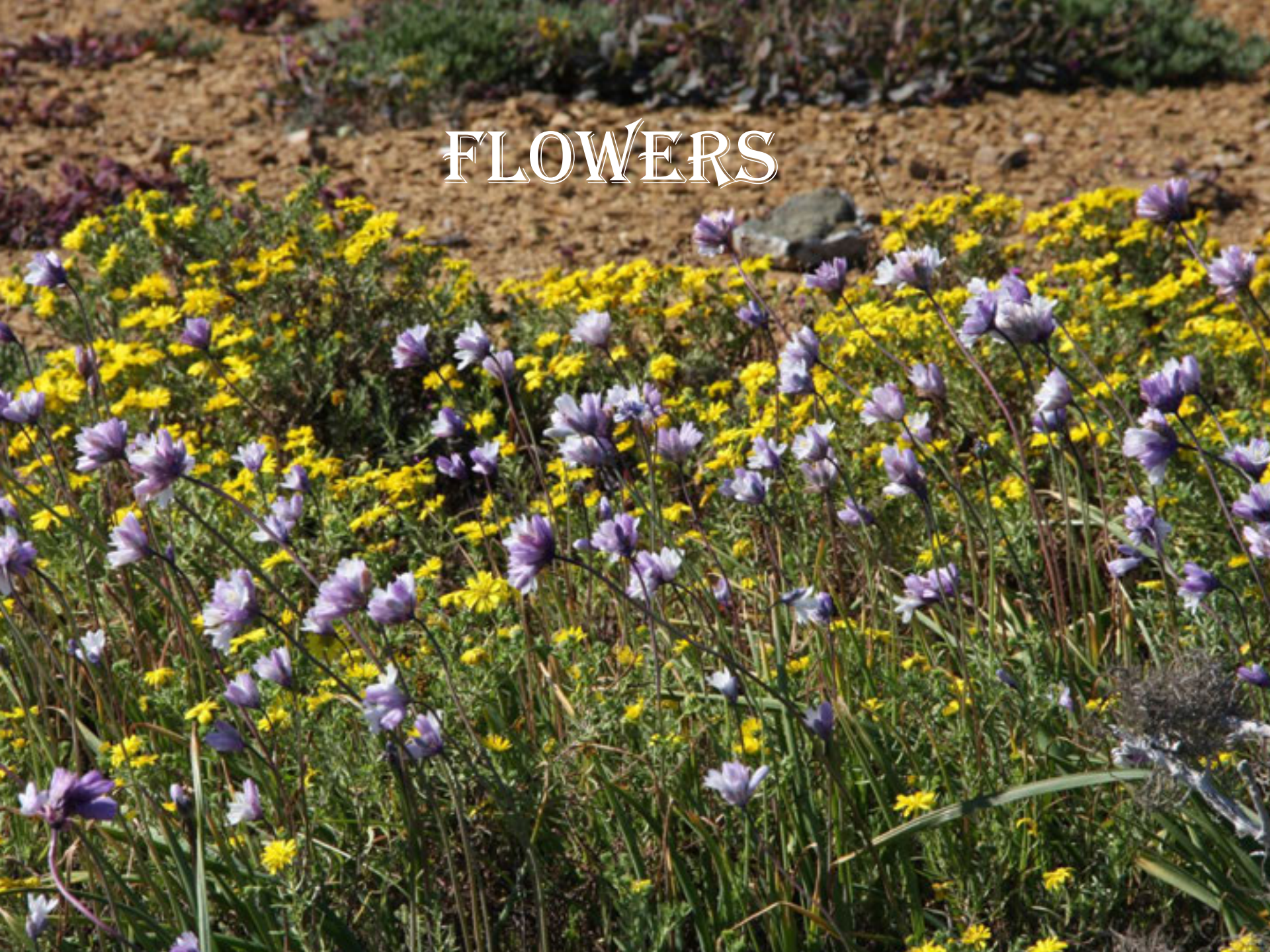


Pickleweed in a mangrove estuary

Salicornia subterminalis / *Arthrocnemum subterminale*



FLOWERS



Adam's Tree

Palo Adán


Fouquieria diguetii



A photograph of a desert landscape featuring a large field of yellow Brittlebrush flowers. The flowers are small and numerous, scattered across a sandy, light-colored ground. In the background, there are several green, bushy plants and some bare, greyish branches. The overall scene is bright and sunny.

Brittlebrush
Incienso

Encelia farinosa var.

A photograph of a Brittlebrush incienco plant (Encelia farinosa var.) growing in a sandy, arid environment. The plant features several bright yellow flowers with prominent orange-brown centers, interspersed with smaller white flowers. The foliage consists of green, needle-like leaves. The ground is light-colored sand with some small rocks and shadows cast by the plant.

Brittlebrush
incienco

Encelia farinosa var.



Cinch Weed
Hierba Chinche
Pectis papposa

Sun Cup

Camissonia angelorum





Rock Daisy
Manzanillo

Amauria rotundifolia



Red Sand-Verbena

Alfombrilla

Abronia Maritima

A photograph of a Palmer Sand Lily (Coveria) in a desert environment. The flower is a vibrant purple color and is shown in a cluster on a single stem. The background consists of sandy ground and a dense network of dry, grey, tangled branches, likely from a coastal shrub. The sky is a clear, bright blue. The overall scene is brightly lit, suggesting a sunny day.

Palmer Sand Lily
Coveria

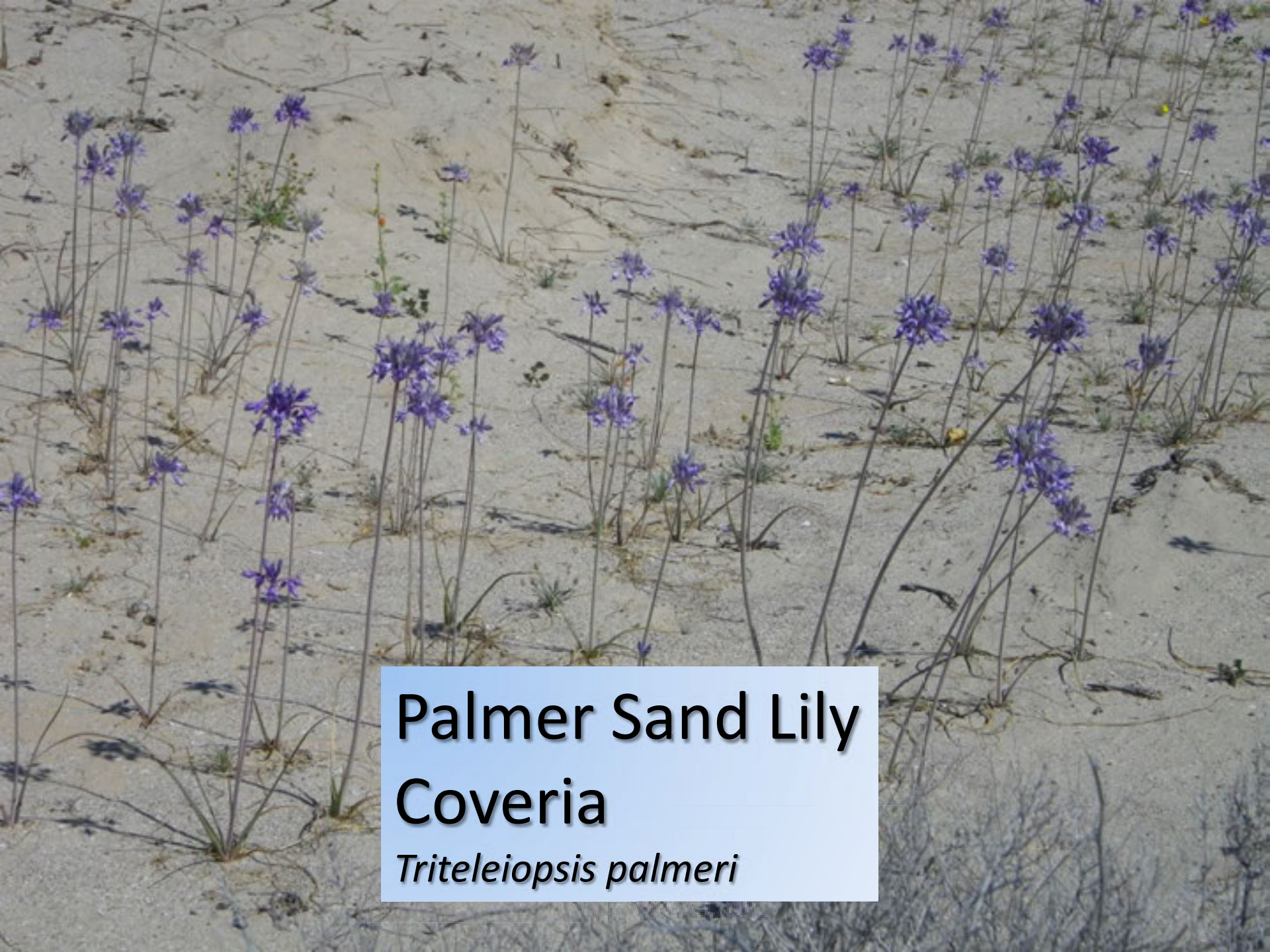
Triteleiopsis palmeri

Palmer Sand Lily

Coveria

Triteleiopsis palmeri



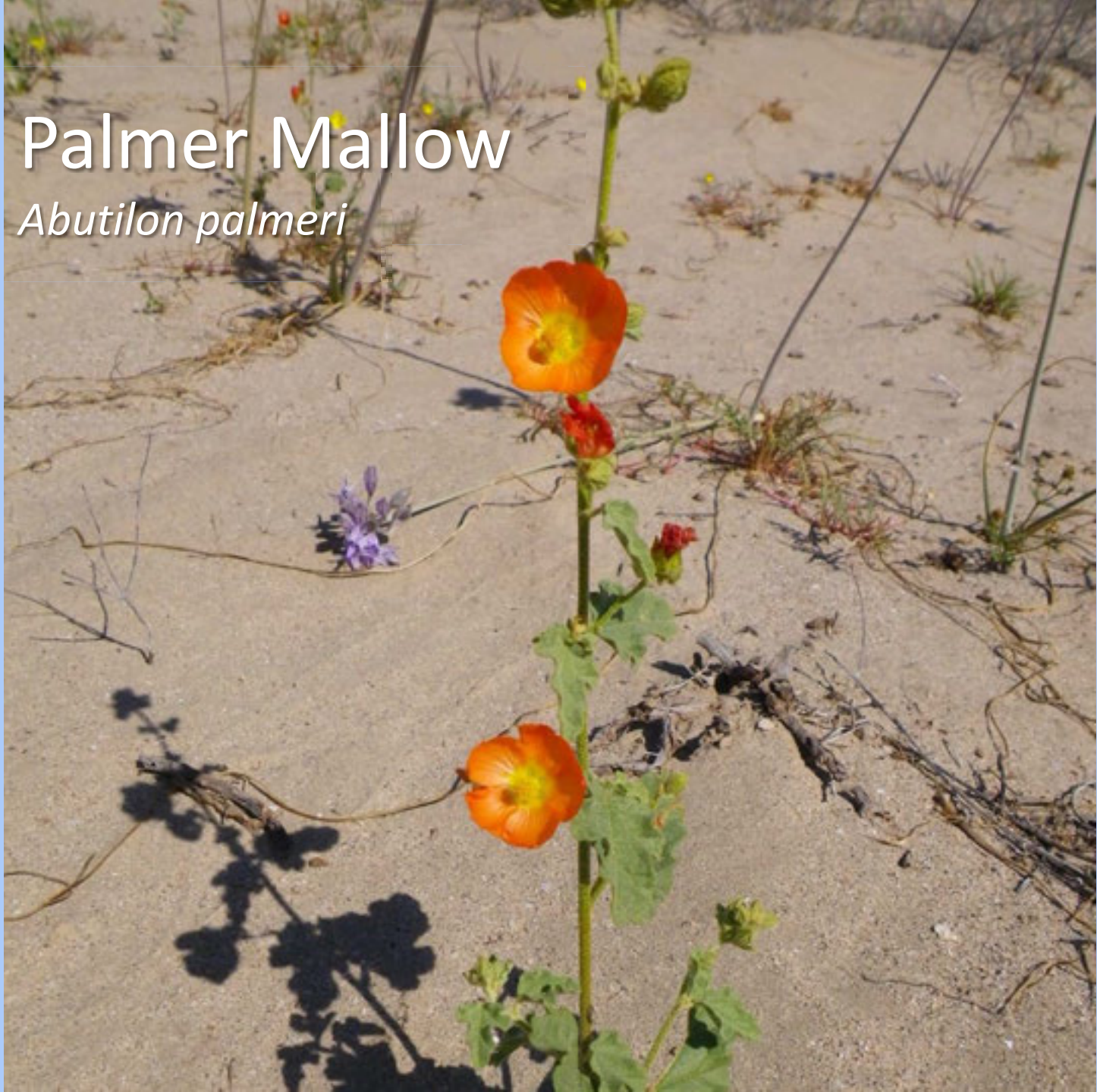


Palmer Sand Lily
Coveria

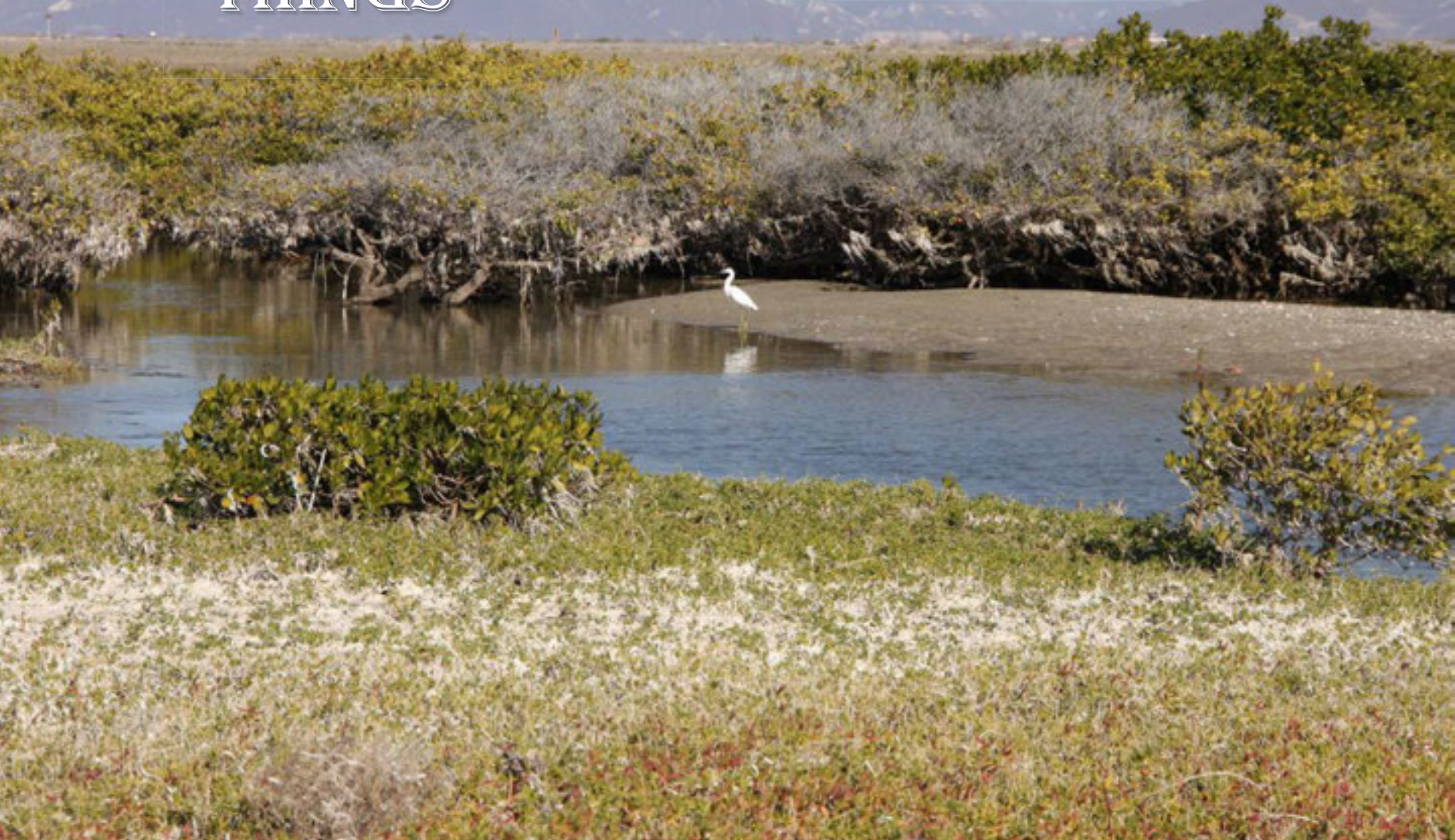
Triteleopsis palmeri

Palmer Mallow

Abutilon palmeri



OTHER PLANTS AND THINGS



Veatch Dodder

Manto de la Virgen

Cuscuta veatchii



Lichen
Unknown



Eel Grass

Zostera marina

















